

STOCK PROGRAM

spring / summer 2021



MUSTANG[®]

True Denim

CONTENT

Stock Program
spring / summer 2021

BOTTOMS & TOPS MEN

TRAMPER	PAGE	6 - 7
OREGON STRAIGHT	PAGE	8 - 9
OREGON TAPERED K	PAGE	10 - 11
OREGON TAPERED	PAGE	14 - 15
VEGAS	PAGE	16 - 17
MICHIGAN STRAIGHT	PAGE	18 - 19
WASHINGTON	PAGE	20 - 23
CHICAGO SHORTS	PAGE	24 - 25
1/2 SLV ALEX C LOGO TEE	PAGE	27
1/2 SLV 2-PACK C-NECK TEE	PAGE	28
1/2 SLV 2-PACK V-NECK TEE	PAGE	28
1/2 SLV POLO SHIRT	PAGE	29
1/2 SLV AARON C-NECK TEE	PAGE	30
1/2 SLV AARON V-NECK TEE	PAGE	30
1/1 SLV CASPER KC BASIC SHIRT	PAGE	31
1/1 SLV ANTON B BASIC LONGSLEEVE	PAGE	32
1/1 SLV BASIC V-NECK JUMPER	PAGE	33

BOTTOMS & TOPS WOMEN

SISSY SLIM	PAGE	36 - 37
SISSY STRAIGHT	PAGE	38 - 39
JASMIN SLIM	PAGE	40 - 41
JASMIN JEGGINGS	PAGE	42 - 43
MIA JEGGINGS	PAGE	44 - 45
REBECCA	PAGE	46 - 47
JULIA	PAGE	48 - 49
1/2 SLV ALINA C LOGO TEE	PAGE	51

ADDRESSES LICENSEES	PAGE	52 - 53
---------------------	------	---------

ADDRESSES WORLDWIDE	PAGE	54
---------------------	------	----

SHOWROOMS	PAGE	55
-----------	------	----

MUSTANG steht für Pioniergeist, Mut und den Willen, Besonderes zu erschaffen. Vor fast 90 Jahren legten wir den Grundstein für die deutsche Erfolgsgeschichte im Denim-Business. Was damals in Künzelsau (Baden-Württemberg) startete wurde schnell zur Erfolgsgeschichte „Made in Germany“. Erste Damenjeans, erste Cordjeans, sowie die erste Stretch Jeans in Europa kamen aus dem Hause MUSTANG. Bis heute sind wir unseren Wurzeln treu geblieben. DENIM ist das, was wir mit Passion und Expertise tun. MUSTANG steht für höchste Qualitätsmaßstäbe und traditionsbewusste Professionalität.

„True Denim for true people“ ist unsere Philosophie und überzeugt mit perfekter Passform und authentischen Jeanslooks. Dieses Versprechen geben wir Ihnen auch für die Styles aus unserer NOS Kollektion.

MUSTANG stands for pioneering spirit, courage and the will to create something special. Almost 90 years ago, we laid the foundation for the German success story in the denim business. What started in Künzelsau (Baden-Württemberg) quickly became a success story „Made in Germany“. The first ladies' jeans, the first corduroy jeans and the first stretch jeans in Europe came from MUSTANG. Until today, we have remained true to our roots. DENIM is what we do with passion and expertise. MUSTANG stands for the highest quality standards and tradition-conscious professionalism.

„True Denim for true people“ is our philosophy and convinces with perfect fit and authentic jeans looks. We also make this promise to you for the styles from our NOS collection.





Bottoms & Tops

MEN



TRAMPER | MEN

1. medium rise | 2. zip fly | 3. slim fit | 4. straight leg | 5. foot with 41 cm based on size 32

WAIST SIZE IN "	28	29	30	31	32	33	34	35	36	38	40	42	44	46
LEG LENGTH 30"			•	•	•	•	•	•	•	•	•	•	•	•
LEG LENGTH 32"			•	•	•	•	•	•	•	•	•	•	•	•
LEG LENGTH 34"				•	•	•	•	•	•	•	•	•	•	•
LEG LENGTH 36"					•	•	•	•	•	•	•			

• only available in style 1006743-5000-881



STYLE 1006741-4000-940

11,5 oz black stretch denim
rinse washed

99% CO | 1% EL

STYLE 1006742-5000-880

12,0 oz classic heritage ring denim
stone washed

78% CO | 21% PES | 1% EL

STYLE 1006742-5000-881

12,0 oz classic heritage ring denim
stone washed

78% CO | 21% PES | 1% EL



STYLE 1006744-5000-582

11,0 oz authentic stretch denim
medium washed

99% CO | 1% EL



STYLE 1006743-5000-881

12,0 oz crosshatch stretch denim
stone washed

99% CO | 1% EL



STYLE 3115-5111-583
 11,0 oz heritage flat optic stretch denim
 stone washed
 98% CO | 2% EL

STYLE 3115-5111-593
 11,0 oz heritage flat optic stretch denim
 rinse washed
 98% CO | 2% EL

OREGON STRAIGHT | MEN

1. low rise | 2. zip fly | 3. slim fit | 4. straight leg | 5. foot with 43 cm based on size 32

WAIST SIZE IN "	28	29	30	31	32	33	34	35	36	38	40	42	44	46
LEG LENGTH 30"		•	•	•	•	•	•	•	•					
LEG LENGTH 32"		•	•	•	•	•	•	•	•	•	•			
LEG LENGTH 34"		•	•	•	•	•	•	•	•	•	•			
LEG LENGTH 36"				•	•	•	•	•	•	•				

• only available in style 3115-5111-583





OREGON TAPERED K | MEN

1. low rise | 2. zip fly | 3. slim fit | 4. tapered leg | 5. foot with 35 cm based on size 32

WAIST SIZE IN "	28	29	30	31	32	33	34	35	36	38	40	42	44	46
LEG LENGTH 30"			•	•	•	•	•	•	•					
LEG LENGTH 32"	•	•	•	•	•	•	•	•	•	•				
LEG LENGTH 34"		•	•	•	•	•	•	•	•	•				
LEG LENGTH 36"					•	•	•	•	•	•	•			

• only available in style 1006064-5000-313 & 1006064-5000-683



STYLE 3112-5455-536

10,0 oz fashion knitted denim
medium bleach

83% CO | 15% PES | 2% EL

STYLE 3112-5576-082

10,0 oz fashion knitted blue/black denim
dark

83% CO | 15% PES | 2% EL

STYLE 1006064-5000-313

9,25 oz blue knitted denim
medium washed

99% CO | 1% EL



STYLE 1006064-5000-683

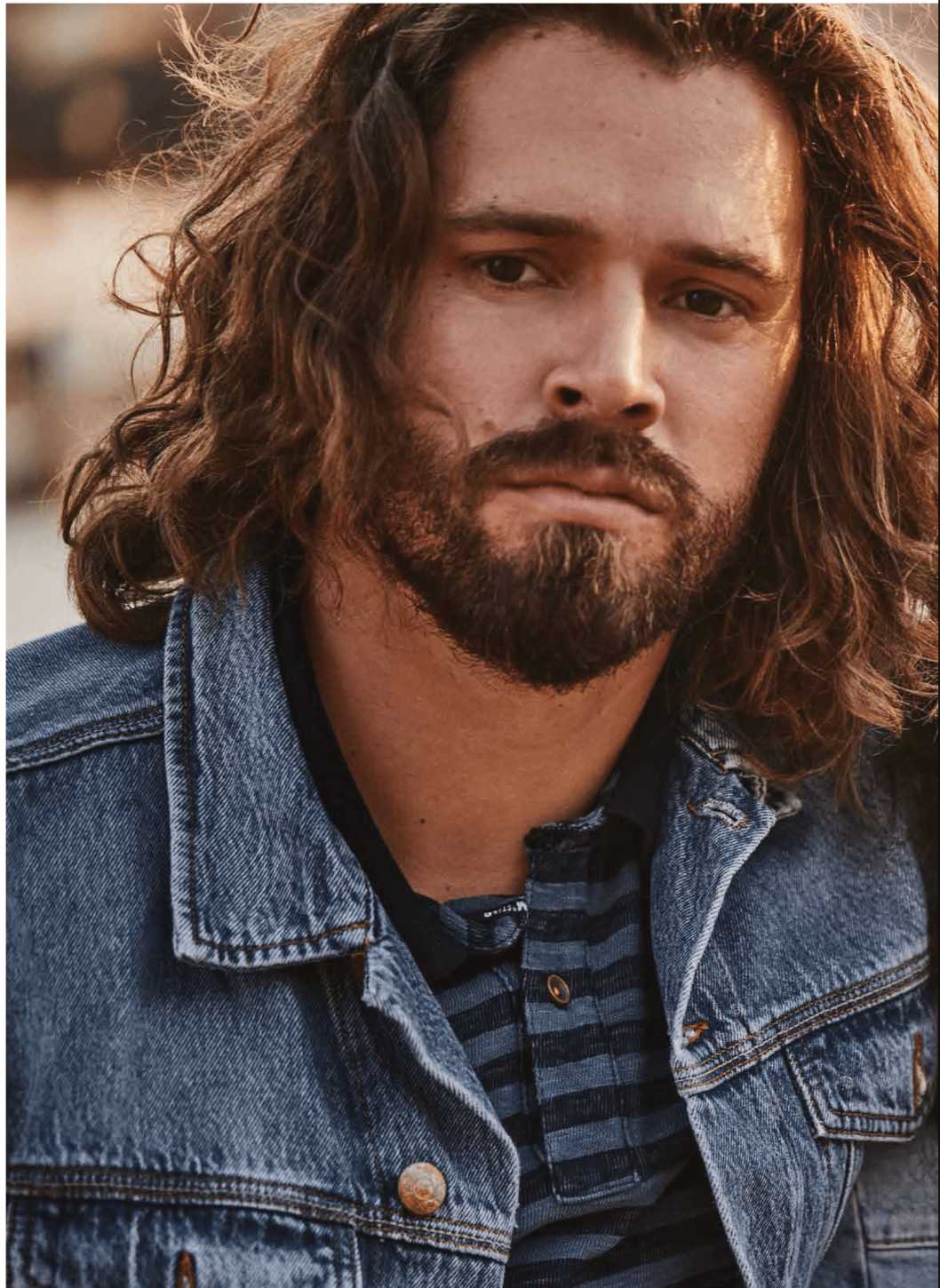
9,25 oz blue knitted denim
medium washed

99% CO | 1% EL

STYLE 1006793-4000-883

10,75 oz fashion black denim
stone washed

83% CO | 15% PES | 2% EL





OREGON TAPERED | MEN

1. low rise | 2. zip fly | 3. slim fit | 4. tapered leg | 5. foot with 35 cm based on size 32

WAIST SIZE IN "	28	29	30	31	32	33	34	35	36	38	40	42	44	46
LEG LENGTH 30"		•	•	•	•	•	•	•	•					
LEG LENGTH 32"	•	•	•	•	•	•	•	•	•	•	•	•		
LEG LENGTH 34"		•	•	•	•	•	•	•	•	•				
LEG LENGTH 36"			•	•	•	•	•	•	•	•	•			

• only available in styles 3116-5111-583 & 3116-5111-593 & 3116-5799-490

• only available in style 3116-5799-490

• only available in styles 3116-5111-583 & 3116-5111-593



STYLE 3116-5111-583

11,0 oz heritage flat optic stretch denim
rinsed washed

98% CO | 2% EL



STYLE 3116-5111-593

11,0 oz heritage flat optic stretch denim
rinsed washed

98% CO | 2% EL



STYLE 3116-5764-068

9,75 oz ultra fit denim
rinsed washed

92% CO | 6% PES | 2% EL



STYLE 3116-5799-490

10,25 oz black black denim
rinsed washed

98% CO | 2% EL



VEGAS | MEN

1. medium rise | 2. zip fly | 3. slim fit | 4. slim leg | 5. foot with 35 cm based on size 32

WAIST SIZE IN "	28	29	30	31	32	33	34	35	36	38	40	42	44	46
LEG LENGTH 30"			•	•	•	•	•	•	•	•				
LEG LENGTH 32"	•	•	•	•	•	•	•	•	•	•	•			
LEG LENGTH 34"		•	•	•	•	•	•	•	•	•	•			
LEG LENGTH 36"				•	•	•	•	•	•	•				



STYLE 1008948-5000-883
10,0 oz blue/black ultra jet denim
stone washed
92% CO | 6% EME | 2%EL



STYLE 1008949-5000-783
9,75 oz ultra fit denim
stone washed
92% CO | 6% PES | 2%EL



STYLE 1010574-4500-883
11 oz ultra jet grey denim
stone washed
92% CO | 6% EME | 2%EL





STYLE 3135-5111-583
 11,0 oz heritage flat optic stretch denim
 stone washed
 98% CO | 2% EL



STYLE 3135-5111-593
 11,0 oz heritage flat optic stretch denim
 rinsed washed
 98% CO | 2% EL

MICHIGAN STRAIGHT | MEN

1. medium rise | 2. button fly | 3. regular fit | 4. straight leg | 5. foot with 43 cm based on size 32

WAIST SIZE IN "	28	29	30	31	32	33	34	35	36	38	40	42	44	46
LEG LENGTH 30"			•	•	•	•	•	•	•					
LEG LENGTH 32"		•	•	•	•	•	•	•	•	•	•			
LEG LENGTH 34"			•	•	•	•	•	•	•	•	•			
LEG LENGTH 36"					•	•	•	•	•					
LEG LENGTH 38"						•	•		•	•	•			
LEG LENGTH 40"						•	•		•	•	•			

• only available in style 3135-5111-593





WASHINGTON | MEN

1. medium rise | 2. zip fly | 3. slim fit | 4. slim leg | 5. foot with 38 cm based on size 32

WAIST SIZE IN "	28	29	30	31	32	33	34	35	36	38	40	42	44	46
LEG LENGTH 30"				•	•	•	•	•	•	•	•			
LEG LENGTH 32"			•	•	•	•	•	•	•	•	•	•	•	
LEG LENGTH 34"				•	•	•	•	•	•	•	•	•	•	•
LEG LENGTH 36"						•	•	•	•	•				

WAIST SIZE IN "	28	29	30	31	32	33	34	35	36	38	40	42	44	46
LEG LENGTH 30"					•	•	•		•	•				
LEG LENGTH 32"				•	•	•	•		•	•	•			
LEG LENGTH 34"					•	•	•		•	•				

• only available in styles 1007655-4000-780 & 1007655-4000-940



STYLE 1007640-5000-881

11,25 oz basic stretch blue denim
stone washed

99% CO | 1% EL

STYLE 1007640-5000-900

11,25 oz basic stretch blue denim
raw

99% CO | 1% EL

STYLE 1010575-5000-883

10 oz ultra jet blue black denim
stone washed

92% CO | 6% EME | 2% EL



STYLE 1007655-4000-780

11,5 oz black denim
stone washed

64% CO | 31% PES | 3% CV | 2% EL

STYLE 1007655-4000-940

11,5 oz black denim
rinse washed

64% CO | 31% PES | 3% CV | 2% EL



STYLE 1009074-4142
7,9 oz woven twill
black
98% CO | 2% EL

STYLE 1009074-5323
7,9 oz woven twill
sky captain
98% CO | 2% EL

WASHINGTON | MEN

1. medium rise | 2. zip fly | 3. slim fit | 4. slim leg | 5. foot with 38 cm based on size 32

WAIST SIZE IN "	28	29	30	31	32	33	34	35	36	38	40	42	44	46
LEG LENGTH 30"				•	•	•	•	•	•	•	•			
LEG LENGTH 32"			•	•	•	•	•	•	•	•	•	•	•	
LEG LENGTH 34"				•	•	•	•	•	•	•	•	•	•	•
LEG LENGTH 36"						•	•	•	•	•				





CHICAGO SHORTS | MEN

1. medium rise | 2. zip fly | 3. regular fit

WAIST SIZE IN "

28 29 30 31 32 33 34 35 36 38 40 42 44 46



STYLE 1007754-5000-103
10 oz fashion knitted denim
medium washed
83% CO | 15% PES | 2% EL



STYLE 1007754-5000-313
10 oz fashion knitted denim
medium washed
83% CO | 15% PES | 2% EL



STYLE 1007754-5000-943
10 oz fashion knitted denim
rinsed washed
83% CO | 15% PES | 2% EL



STYLE 1007755-4000-313
10,75 oz fashion black knitted denim
medium washed
83% CO | 15% PES | 2% EL



1/2 SLV ALEX C LOGO TEE | MEN



STYLE 1010372-4140
combed single jersey
mid grey melange | regular fit
85% CO | 15% CV
S-XXXL



STYLE 1010372-2045
combed single jersey
general white | regular fit
100% CO
S-XXXL



STYLE 1010372-4142
combed single jersey
black | regular fit
100% CO
S-XXXL



STYLE 1010372-4085
combed single jersey
blue nights | regular fit
100% CO
S-XXXL

1/2 SLV 2-PACK C-NECK TEE | MEN



STYLE 1006169-2045

combed single jersey
general white | standard fit

100% CO

S-XXXL



STYLE 1006169-4142

combed single jersey
black | regular fit

100% CO

S-XXXL

1/2 SLV 2-PACK V-NECK TEE | MEN



STYLE 1006170-2045

combed single jersey
general white | standard fit

100% CO

S-XXXL



STYLE 1006170-4142

combed single jersey
black | standard fit

100% CO

S-XXXL

1/2 SLV POLO SHIRT | MEN



STYLE 1008810-4136

knit piqué
dark sapphire | regular fit

100% CO

S-XXXL

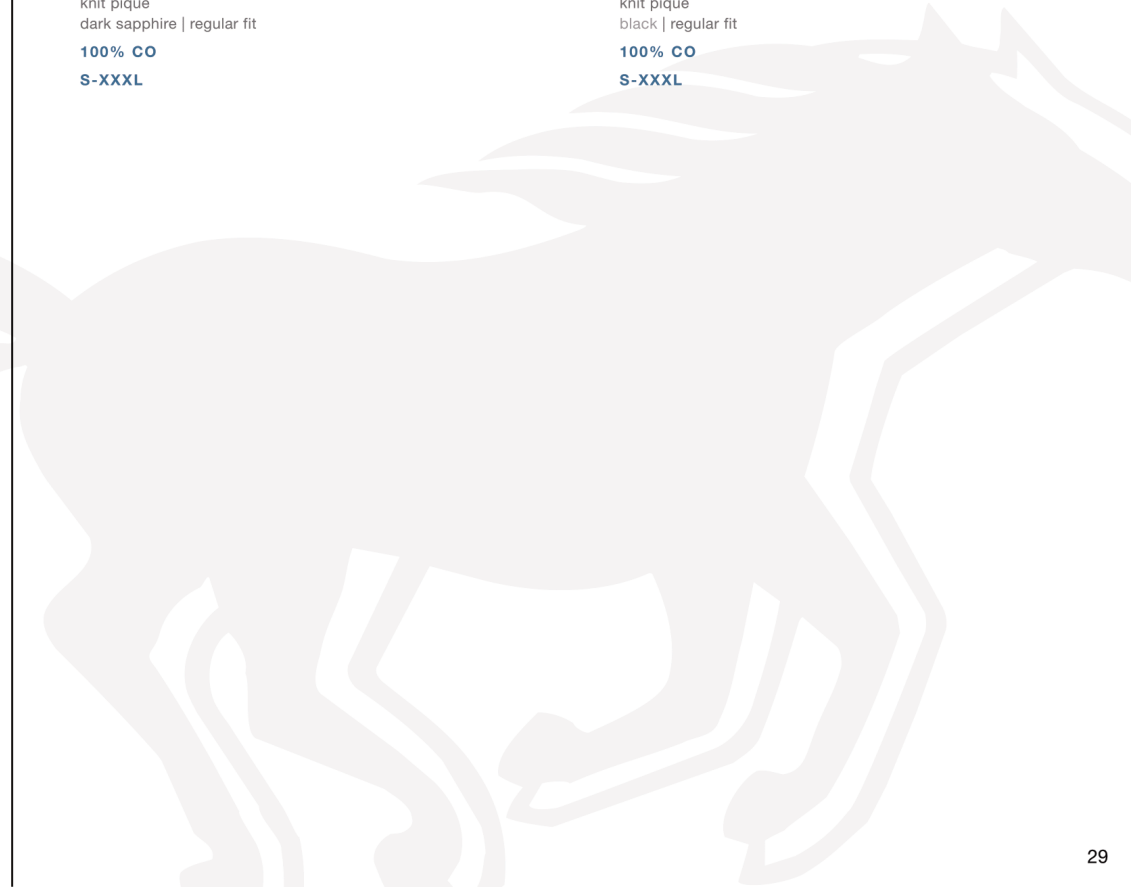


STYLE 1008810-4142

knit piqué
black | regular fit

100% CO

S-XXXL



1/2 SLV AARON C-NECK TEE | MEN



STYLE 1008815-2045

knit rib
general white | slim fit

100% CO

S-XXXL



STYLE 1008815-4142

knit rib
black | slim fit

100% CO

S-XXXL

1/2 SLV AARON V-NECK TEE | MEN



STYLE 1008814-2045

knit rib
general white | slim fit

100% CO

S-XXXL



STYLE 1008814-4142

knit rib
black | slim fit

100% CO

S-XXXL



1/1 SLV CASPER KC BASIC SHIRT | MEN



STYLE 1008960-2045

woven poplin
general white | slim fit

98% CO | 2% EL

S-XXXL

1/1 SLV ANTON B BASIC LONGSLEEVE | MEN



STYLE 1009340-4142

knit rib
black | slim fit

100% CO

S-XXXL

1/1 SLV BASIC V-NECK JUMPER | MEN



STYLE 1006813-4136

basic cotton yarn
dark sapphire | standard fit

100% CO

S-XXXL



STYLE 1006813-4140

basic cotton yarn
midgrey melange | standard fit

100% CO

S-XXXL



Bottoms & Tops

WOMEN





SISSY SLIM | WOMEN

1. high rise | 2. zip fly | 3. slim fit | 4. slim leg | 5. foot with 32 cm based on size 28

WAIST SIZE IN "	24	25	26	27	28	29	30	31	32	33	34	35	36	38
LEG LENGTH 30"			•	•	•	•	•	•	•	•	•			
LEG LENGTH 32"			•	•	•	•	•	•	•	•	•		•	
LEG LENGTH 34"				•	•	•	•	•	•	•	•			

• only available in style 0530-5574-070 & 0530-5575-492



STYLE 0530-5574-070
9,5 oz soft blue super stretch denim
stone washed
74% CO | 22% PES | 4% EL



STYLE 1006275-5000-941
9,5 oz soft blue super stretch denim
rinsed washed
74% CO | 22% PES | 4% EL



STYLE 0530-5575-492
9,5 oz soft black super stretch denim
dark vintage
73% CO | 24% PES | 3% EL



STYLE 1009317-5000-502
10,8 oz soft structured stretch denim
medium wash
95% CO | 3% EME | 2% EL



SISSY STRAIGHT | WOMEN

1. high rise | 2. zip fly | 3. comfort fit | 4. straight leg | 5. foot with 40 cm based on size 28

WAIST SIZE IN "	24	25	26	27	28	29	30	31	32	33	34	35	36	38
LEG LENGTH 30"			●	●	●	●	●	●	●	●	●			
LEG LENGTH 32"			●	●	●	●	●	●	●	●	●		●	●
LEG LENGTH 34"				●	●	●	●	●	●	●	●		●	
LEG LENGTH 36					●	●	●	●	●	●	●			

● only available in styles 0550-5032-582 & 1009315- 5000-884

● only available in style 0550-5032-582

● only available in styles 0550-5032-582



STYLE 0550-5032-582
11,5 oz special modern stretch denim
rinsed washed
98% CO | 2% EL



STYLE 1009315-5000-884
9,25 oz dual core power stretch denim
stone washed
83% CO, 15% PES, 2% EL



STYLE 1009319-5000-502
10,8 oz soft structured stretch denim
medium washed
95% CO | 3% EME | 2% EL



JASMIN SLIM | WOMEN

1. medium rise | 2. zip fly | 3. slim fit | 4. slim leg | 5. foot width 32 cm based on size 28

WAIST SIZE IN "	24	25	26	27	28	29	30	31	32	33	34	35	36	38
LEG LENGTH 30"		•	•	•	•	•	•	•	•	•	•			
LEG LENGTH 32"		•	•	•	•	•	•	•	•	•	•			
LEG LENGTH 34"			•	•	•	•	•	•	•	•	•			
LEG LENGTH 36					•	•	•	•	•	•				

• only available in styles 0586-5039-512 & 0586-5574-591

• only available in style 0586-5039-512



STYLE 0586-5032-586

11,5 oz special modern stretch denim
rinsed washed

98% CO | 2% EL



STYLE 0586-5039-512

11,75 oz true blue super stretch denim
stone washed

98% CO | 2% EL



STYLE 0586-5574-591

9,5 oz soft blue super stretch denim
rinsed washed

74% CO | 22% PES | 4% EL

